

VISBY

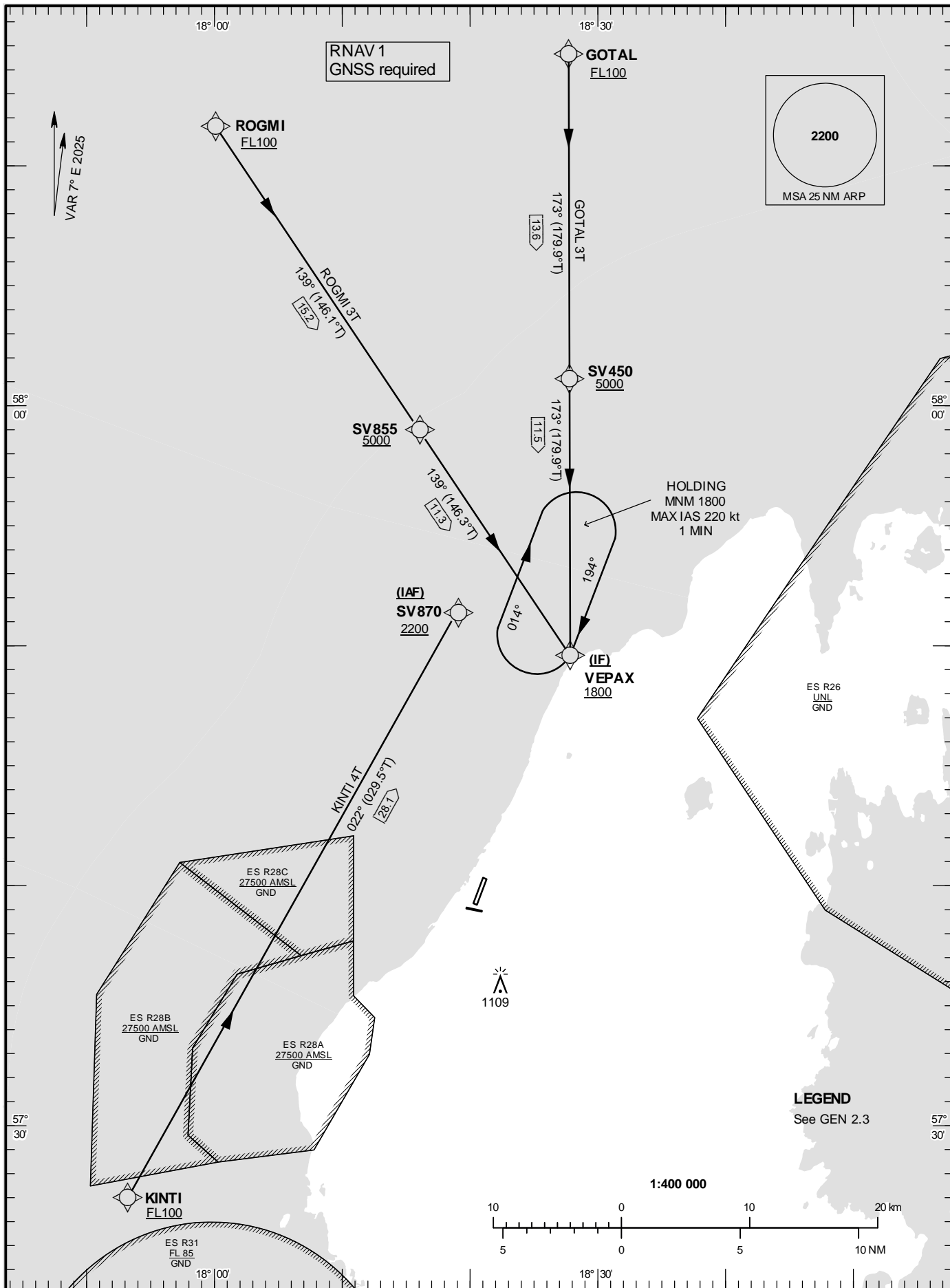
**STANDARD ARRIVAL
CHART - INSTRUMENT
(STAR) - ICAO**

HGT and ALT in ft
BRG are MAG (True)
TA 5000 ft AMSL

VISBY TOWER	120.305
VISBY APPROACH	126.155

RNAV RWY 21

GOTAL 3T, KINTI 4T, ROGMI 3T



CHANGE: Editorial

VISBY

Prescribed Coding of RNAV STARs for RWY 21

REMARK

When descending on initial approach, noise reductions should be achieved using Low Power, Low Drag operating procedures (LP/LD) by maintaining a "clean" aircraft configuration until the final stage of the approach, provided this is consistent with safe operation of the aircraft.

Specified minimum level/ALT at WPT must be adhered to unless specifically cancelled to ATC.

Operators unable flying RNAV shall inform ATC by using phraseology "UNABLE RNAV STAR". ATC will then provide vectors or provide clearance via conventional STAR.

GOTAL 3T (GOTAL THREE TANGO ARRIVAL)

Path Desc	Waypoint Identifier	Fly-over	Course °M(°T)	Dist (NM)	Turn Dir	Altitude	Speed Limits (kt)	VPA/RDH	Rec Navaid	Navigation Specification
IF	GOTAL	-	-	-	-	+FL100	-	-	-	RNAV 1
TF	SV450	-	173°(179.9°)	13.6	-	+5000	-	-	-	RNAV 1
TF	VEPAX	-	173°(179.9°)	11.5	-	+1800	-	-	-	RNAV 1

STAR instruction: GOTAL (FL100 or above) – SV450 (5000 ft or above) – VEPAX (1800 ft or above)

KINTI 4T (KINTI FOUR TANGO ARRIVAL)

Path Desc	Waypoint Identifier	Fly-over	Course °M(°T)	Dist (NM)	Turn Dir	Altitude	Speed Limits (kt)	VPA/RDH	Rec Navaid	Navigation Specification
IF	KINTI	-	-	-	-	+FL100	-	-	-	RNAV 1
TF	SV870	-	022°(029.5°)	28.1	-	+2200	-	-	-	RNAV 1

STAR instruction: KINTI (FL100 or above) – SV870 (2200 ft or above)

ROGMI 3T (ROGMI THREE TANGO ARRIVAL)

Path Desc	Waypoint Identifier	Fly-over	Course °M(°T)	Dist (NM)	Turn Dir	Altitude	Speed Limits (kt)	VPA/RDH	Rec Navaid	Navigation Specification
IF	ROGMI	-	-	-	-	+FL100	-	-	-	RNAV 1
TF	SV855	-	139°(146.1°)	15.2	-	+5000	-	-	-	RNAV 1
TF	VEPAX	-	139°(146.3°)	11.3	-	+1800	-	-	-	RNAV 1

STAR instruction: ROGMI (FL100 or above) – SV855 (5000 ft or above) – VEPAX (1800 ft or above)